



3557 South Ave.
Springfield, MO 65807

www.billbeall.com

1,575 SF OFFICE SPACE - FOR LEASE



HIGHLIGHTS

- 1,575 SF Office Space
- Can be combined with adjacent 4,350 SF for a total of 5,925 SF
- Open Reception Area, Private Offices & 2 Restrooms
- Located in the Kickapoo Corners Shopping Center
- Lease Rate: \$8.00 / SF (\$1,050.00 / Month)
- NNN : \$2.85 / SF (\$374.00 / Month)
- Estimated Monthly Payment: \$1,424.00

FOR ADDITIONAL INFORMATION PLEASE CONTACT

Bill Beall Co., Inc.

2921 S. National Ave., Springfield, MO 65804

(417) 887-5535 email: beall@billbeall.com

**3557 South Ave.
Springfield, MO 65807**



Bill Beall Co., Inc.

2921 S. National Ave., Springfield, MO 65804

(417) 887-5535 email: beall@billbeall.com

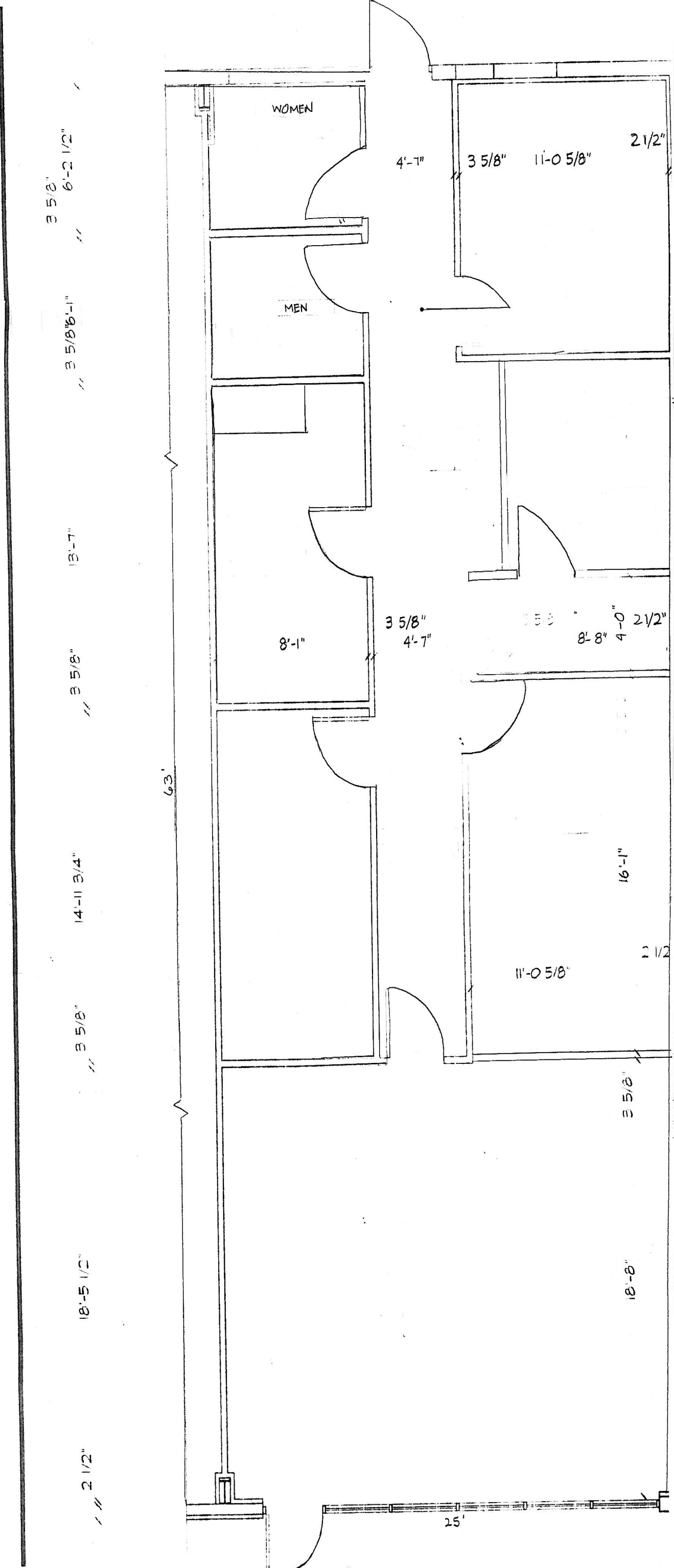
**3557 South Ave.
Springfield, MO 65807**



Bill Beall Co., Inc.

2921 S. National Ave., Springfield, MO 65804

(417) 887-5535 email: beall@billbeall.com



3557 S. South Ave.



Business Summary

3600 S Campbell Ave, Springfield, Missouri, 65807
Rings: 1, 3, 5 mile radii

Prepared by Esri
Latitude: 37.14866
Longitude: -93.29583

Data for all businesses in area

	1 mile		3 miles		5 miles	
	Number	Percent	Number	Percent	Number	Percent
Total Businesses:	773		4,615		8,351	
Total Employees:	16,196		83,315		148,864	
Total Residential Population:	8,911		74,614		166,443	
Employee/Residential Population Ratio (per 100 Residents)	182		112		89	
by SIC Codes	Businesses		Businesses		Businesses	
	Number	Percent	Number	Percent	Number	Percent
Agriculture & Mining	9	1.2%	74	1.6%	159	1.9%
Construction	21	2.7%	195	4.2%	417	5.0%
Manufacturing	8	1.0%	66	1.4%	180	2.2%
Transportation	13	1.7%	78	1.7%	153	1.8%
Communication	12	1.6%	65	1.4%	116	1.4%
Utility	0	0.0%	4	0.1%	18	0.2%
Wholesale Trade	13	1.7%	111	2.4%	257	3.1%
Retail Trade Summary	186	24.1%	1,087	23.6%	1,821	21.8%
Home Improvement	5	0.6%	31	0.7%	77	0.9%
General Merchandise Stores	3	0.4%	40	0.9%	67	0.8%
Food Stores	17	2.2%	97	2.1%	165	2.0%
Auto Dealers, Gas Stations, Auto Aftermarket	29	3.8%	98	2.1%	209	2.5%
Apparel & Accessory Stores	12	1.6%	113	2.4%	144	1.7%
Furniture & Home Furnishings	12	1.6%	82	1.8%	124	1.5%
Eating & Drinking Places	65	8.4%	332	7.2%	572	6.8%
Miscellaneous Retail	44	5.7%	293	6.3%	463	5.5%
Finance, Insurance, Real Estate Summary	111	14.4%	709	15.4%	1,153	13.8%
Banks, Savings & Lending Institutions	29	3.8%	140	3.0%	203	2.4%
Securities Brokers	13	1.7%	101	2.2%	142	1.7%
Insurance Carriers & Agents	37	4.8%	219	4.7%	339	4.1%
Real Estate, Holding, Other Investment Offices	32	4.1%	249	5.4%	469	5.6%
Services Summary	368	47.6%	1,997	43.3%	3,514	42.1%
Hotels & Lodging	3	0.4%	24	0.5%	52	0.6%
Automotive Services	12	1.6%	73	1.6%	179	2.1%
Motion Pictures & Amusements	18	2.3%	140	3.0%	251	3.0%
Health Services	111	14.4%	452	9.8%	572	6.8%
Legal Services	21	2.7%	109	2.4%	227	2.7%
Education Institutions & Libraries	10	1.3%	66	1.4%	177	2.1%
Other Services	194	25.1%	1,134	24.6%	2,055	24.6%
Government	3	0.4%	31	0.7%	170	2.0%
Unclassified Establishments	29	3.8%	199	4.3%	393	4.7%
Totals	773	100.0%	4,615	100.0%	8,351	100.0%

Source: Copyright 2018 Infogroup, Inc. All rights reserved. Esri Total Residential Population forecasts for 2018.
Date Note: Data on the Business Summary report is calculated using Esri's Data allocation method which uses census block groups to allocate business summary data to custom areas.



Business Summary

3600 S Campbell Ave, Springfield, Missouri, 65807
Rings: 1, 3, 5 mile radii

Prepared by Esri
Latitude: 37.14866
Longitude: -93.29583

by NAICS Codes	Businesses		Employees		Businesses		Employees		Businesses		Employees	
	Number	Percent	Number	Percent	Number	Percent	Number	Percent	Number	Percent	Number	Percent
Agriculture, Forestry, Fishing & Hunting	1	0.1%	3	0.0%	6	0.1%	20	0.0%	22	0.3%	258	0.2%
Mining	1	0.1%	4	0.0%	3	0.1%	14	0.0%	4	0.0%	27	0.0%
Utilities	0	0.0%	0	0.0%	2	0.0%	383	0.5%	8	0.1%	530	0.4%
Construction	24	3.1%	122	0.8%	220	4.8%	1,472	1.8%	456	5.5%	3,140	2.1%
Manufacturing	11	1.4%	48	0.3%	77	1.7%	1,298	1.6%	197	2.4%	4,978	3.3%
Wholesale Trade	13	1.7%	61	0.4%	107	2.3%	1,749	2.1%	248	3.0%	4,922	3.3%
Retail Trade	115	14.9%	2,622	16.2%	724	15.7%	14,008	16.8%	1,201	14.4%	20,960	14.1%
Motor Vehicle & Parts Dealers	24	3.1%	1,302	8.0%	78	1.7%	2,091	2.5%	173	2.1%	4,155	2.8%
Furniture & Home Furnishings Stores	10	1.3%	105	0.6%	47	1.0%	427	0.5%	71	0.9%	557	0.4%
Electronics & Appliance Stores	2	0.3%	6	0.0%	33	0.7%	296	0.4%	47	0.6%	355	0.2%
Bldg Material & Garden Equipment & Supplies Dealers	5	0.6%	47	0.3%	31	0.7%	581	0.7%	74	0.9%	1,006	0.7%
Food & Beverage Stores	11	1.4%	394	2.4%	66	1.4%	1,231	1.5%	127	1.5%	3,454	2.3%
Health & Personal Care Stores	17	2.2%	121	0.7%	90	2.0%	1,193	1.4%	121	1.4%	1,661	1.1%
Gasoline Stations	5	0.6%	29	0.2%	20	0.4%	112	0.1%	37	0.4%	210	0.1%
Clothing & Clothing Accessories Stores	13	1.7%	43	0.3%	138	3.0%	1,288	1.5%	174	2.1%	1,601	1.1%
Sport Goods, Hobby, Book, & Music Stores	7	0.9%	31	0.2%	62	1.3%	2,996	3.6%	95	1.1%	3,281	2.2%
General Merchandise Stores	3	0.4%	459	2.8%	40	0.9%	3,019	3.6%	67	0.8%	3,498	2.3%
Miscellaneous Store Retailers	16	2.1%	82	0.5%	108	2.3%	766	0.9%	189	2.3%	1,111	0.7%
Nonstore Retailers	2	0.3%	2	0.0%	11	0.2%	10	0.0%	27	0.3%	71	0.0%
Transportation & Warehousing	3	0.4%	132	0.8%	37	0.8%	438	0.5%	86	1.0%	1,205	0.8%
Information	18	2.3%	171	1.1%	112	2.4%	2,055	2.5%	227	2.7%	4,919	3.3%
Finance & Insurance	79	10.2%	708	4.4%	467	10.1%	3,644	4.4%	697	8.3%	5,437	3.7%
Central Bank/Credit Intermediation & Related Activities	28	3.6%	523	3.2%	142	3.1%	1,833	2.2%	209	2.5%	2,451	1.6%
Securities, Commodity Contracts & Other Financial	14	1.8%	47	0.3%	106	2.3%	568	0.7%	149	1.8%	1,000	0.7%
Insurance Carriers & Related Activities; Funds, Trusts &	37	4.8%	139	0.9%	220	4.8%	1,242	1.5%	340	4.1%	1,986	1.3%
Real Estate, Rental & Leasing	49	6.3%	266	1.6%	288	6.2%	3,204	3.8%	546	6.5%	4,561	3.1%
Professional, Scientific & Tech Services	86	11.1%	527	3.3%	465	10.1%	3,290	3.9%	894	10.7%	7,411	5.0%
Legal Services	22	2.8%	126	0.8%	125	2.7%	780	0.9%	246	2.9%	2,410	1.6%
Management of Companies & Enterprises	1	0.1%	26	0.2%	8	0.2%	490	0.6%	14	0.2%	515	0.3%
Administrative & Support & Waste Management & Remediation	21	2.7%	190	1.2%	174	3.8%	1,557	1.9%	324	3.9%	3,728	2.5%
Educational Services	14	1.8%	358	2.2%	97	2.1%	1,915	2.3%	214	2.6%	11,443	7.7%
Health Care & Social Assistance	133	17.2%	8,858	54.7%	579	12.5%	34,526	41.4%	786	9.4%	44,241	29.7%
Arts, Entertainment & Recreation	10	1.3%	143	0.9%	86	1.9%	1,038	1.2%	172	2.1%	1,823	1.2%
Accommodation & Food Services	71	9.2%	1,302	8.0%	368	8.0%	7,586	9.1%	639	7.7%	11,857	8.0%
Accommodation	3	0.4%	47	0.3%	24	0.5%	379	0.5%	52	0.6%	1,021	0.7%
Food Services & Drinking Places	68	8.8%	1,255	7.7%	345	7.5%	7,207	8.7%	587	7.0%	10,837	7.3%
Other Services (except Public Administration)	91	11.8%	585	3.6%	565	12.2%	3,504	4.2%	1,051	12.6%	9,783	6.6%
Automotive Repair & Maintenance	4	0.5%	51	0.3%	55	1.2%	409	0.5%	142	1.7%	984	0.7%
Public Administration	3	0.4%	58	0.4%	31	0.7%	869	1.0%	171	2.0%	6,848	4.6%
Unclassified Establishments	29	3.8%	11	0.1%	199	4.3%	255	0.3%	393	4.7%	277	0.2%
Total	773	100.0%	16,196	100.0%	4,615	100.0%	83,315	100.0%	8,351	100.0%	148,864	100.0%

Source: Copyright 2018 Infogroup, Inc. All rights reserved. Esri Total Residential Population forecasts for 2018.
Date Note: Data on the Business Summary report is calculated using Esri's Data allocation method which uses census block groups to allocate business summary data to custom areas.

Kickapoo Corners Shopping Center



Bill Beall Co., Inc.

2921 S. National Ave., Springfield, MO 65804

(417) 887-5535 email: beall@billbeall.com

Kickapoo Corners Shopping Center



Kickapoo Corners View to the North

Kickapoo Corners View to the South



Bill Beall Co., Inc.
 2921 S. National Ave., Springfield, MO 65804
 (417) 887-5535 email: beall@billbeall.com